

BABCOCK NOELL GMBH

INFORMATION FOR PARTNERS

From: Hübner, Thomas

Telefon: +49 931 / 903 - 3105

14.11.2011
Page 1 of 2

To: DLV-container recipients / users

Subject: DLV-container usage - howto

In order to prevent unauthorized access BNG provides data via an encrypted transport container / archive (DLV).

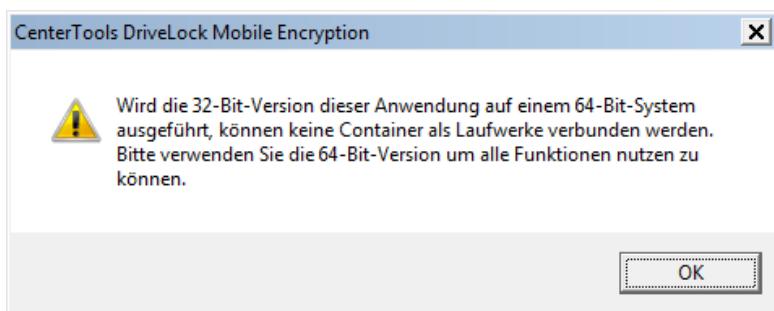
DLV-containers are available via removable medium, via e-mail or via download from our [portal](#). In order to open the DLV container the corresponding password and the program „[DIMobile.exe](#)“ are necessary. Either the required program is already installed on the data medium or can be downloaded from our portal (see useful downloads - [DriveLock Encryption Tool 32/64bit](#)). The required password is provided to you by your BNG contact person.

Please follow the instructions on how to open a DLV container (sample: EEDATA.DLV):

Start [DIMobile.exe](#) ...



Click OK.



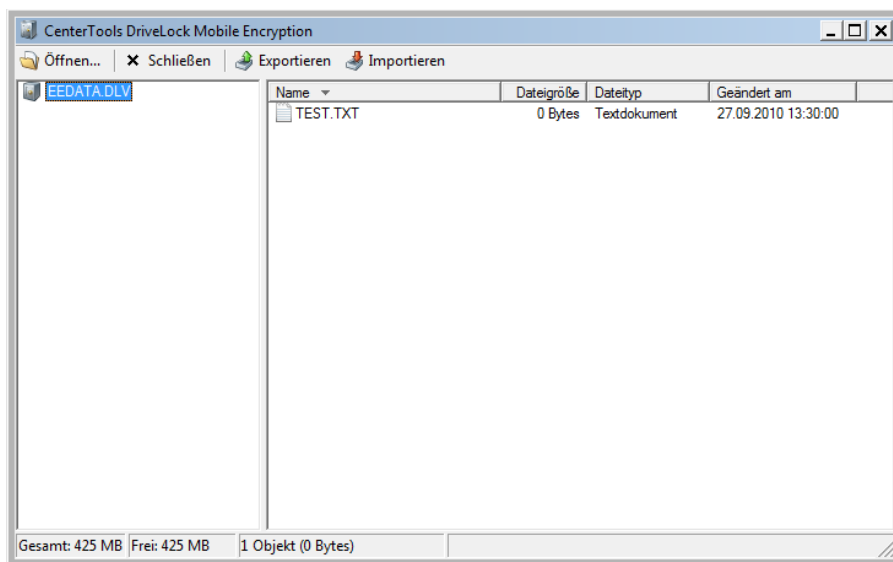
Click OK.

BABCOCK NOELL GMBH

INFORMATION FOR PARTNERS



Select the DLV container and enter the container password provided by BNG.



open container

The included files are shown in a view similar to the Windows explorer. Files can be extracted using the button “Exportieren” or added using the button “Importieren” – also per “Drag & Drop”.

DLV archives can be used like physical containers, i.e. the same container (may also contain different files) for secure return of data to BNG and can either be sent via e-mail (up to 30 MB) or via our [Download-Service](#) (up to 500 MB).

[DIMobile.exe](#) can be executed in the user mode under Windows Vista / Windows 7.

! Always store your password separately from the DLV container!